

Silent Hunt

Objective: To show dogs working independence

- Ring is set up with either the search area in the middle of the ring or along two walls of the ring (see diagrams below)
- Handler may choose to start anywhere along the designated start line, outside the search, which will be marked by cones, soccer dots, or a line taped to the floor.
- Once the handler cues the dog to hunt, *the handler must remain perfectly still and silent.*
- The judge will inform the handler when rat is found, and the handler may move in to reward the dog
- At Levels 2 and 3, the handler may reward the when the judge calls that a rat has been found, then must go back to their original starting position and recue the dog to hunt. Handler must again remain still and silent after recuing the dog.
 - The handler may remove each rat as it is found and hand to the ring steward or restrain the dog while the rat is removed.
 - The time will pause when the handler goes to reward and while the rat is being removed.
 - Time will restart when the handler is back behind the start line, at the original staring point, and recues the dog to hunt.
- No clean or dirty tubes at all levels
- Tubes must be concealed and not be visible to handler
- No bridge; no burrow

Diagram 1
Search area in the middle of ring

Handler can start anywhere outside the line marked by cones surrounding the search area.

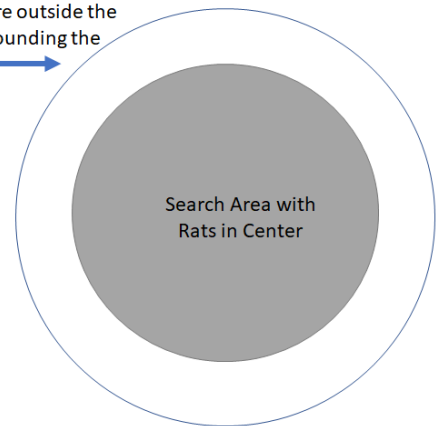
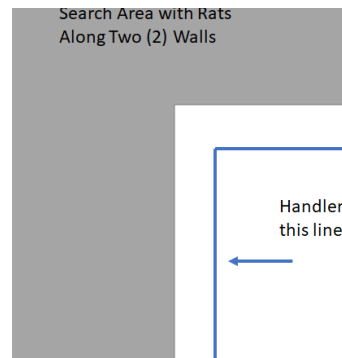


Diagram 2
Search area along two walls

Search Area with Rats
Along Two (2) Walls

Handler can start anywhere along this line marked by cones.



Level One:

- 2 minutes, 1 rat
 - No 30-second warning given before time elapses. The judge is calling the “rat,” so the handler doesn’t need to know.
- Max Height of tubes: 1 foot or lower if this can safely be done
- 1 fault allowed
 - If handler calls “Rat,” a 10-point fault will be incurred.
- NQ if handler moves or speaks (except for calling “Rat” as stated above) after releasing the dog

Level Two:

- 3 minutes, 2 rats
 - No 30-second warning given before time elapses. The judge is calling the “rat,” so the handler doesn’t need to know.
- Max Height of tubes: 18” lower if this can safely be done
- No faults allowed
 - If handler calls “Rat,” this will be an NQ
- NQ if handler moves or speaks after releasing the dog

Level Three:

- 3 ½ minutes, 3 rats
 - No 30-second warning given before time elapses. The judge is calling the “rat,” so the handler doesn’t need to know.
- Max Height of tubes: 2 feet or lower if this can safely be done
- No faults allowed
 - If handler calls “Rat,” this will be an NQ
- NQ if handler moves or speaks after releasing the dog

Silent Hunt Titles

- Level 1 – HRSH – 300 points
- Level 2 – HRSSH – 300 points
- Level 3 – HRSSSH– 300 points
- Handler may elect to remain at any level or go back to any level, once title has been earned and run “Metallic” for Bronze (1,000 points), Silver (2,000 points), Gold (3,000 points), and Platinum (5,000 points) Medallions as in the Regular/Standard Classes.
 - Example: Dog stays at Level 1 Silent Hunt and continues to earn a total of 2,000 points (silver) HRSHS
 - Example: Dog stays at Level 3 Silent Hunt and continues to earns 3,000 points (gold) HRSSSHG